



8 Oliver Court Patricia Close, Slough, SL1 5HE
£299,950

 **HORLER**

8 Oliver Court Patricia Close, Slough, SL1 5HE

Located in the desirable area of Patricia Close, Slough, this charming two-bedroom, two-bathroom first floor apartment in Oliver Court offers a perfect blend of comfort and convenience.

This apartment is situated in a prime location, just a stone's throw away from local shops and amenities, With its thoughtful layout and modern features, this property is an excellent opportunity for those seeking a comfortable home in a vibrant community. Whether you are a first-time buyer or looking to invest, this apartment is sure to impress.

Why not call today on 01753 621234 to arrange a viewing



Property Summary

Located in the desirable area of Patricia Close, Slough, this charming two-bedroom, two-bathroom first floor apartment in Oliver Court offers a perfect blend of comfort and convenience. The property boasts a spacious open-plan living and dining room, ideal for both relaxation and entertaining. The separate kitchen is fully fitted with modern eye and base level units, complemented by integral appliances that make cooking a delight.

The large main bedroom features a fitted wardrobe and an ensuite shower room, providing a private sanctuary for rest and rejuvenation. The second bedroom is a well-proportioned single, perfect for guests or as a home office. Additionally, the family bathroom is conveniently located, ensuring that all your needs are met.

The property operates an entry phone system for added security and peace of mind and there is an allocated parking space within the gated surroundings.

This apartment is situated in a prime location, just a stone's throw away from local shops and amenities, making daily errands a breeze. With its thoughtful layout and modern features, this property is an excellent opportunity for those seeking a comfortable home in a vibrant community. Whether you are a first-time buyer or looking to invest, this apartment is sure to impress.

Why not call today on 01753 621234 to arrange a viewing

General Information

Lease Length 980 years

Service Charge: Approx. £1,366.36 per year

Council Tax Band 'D'

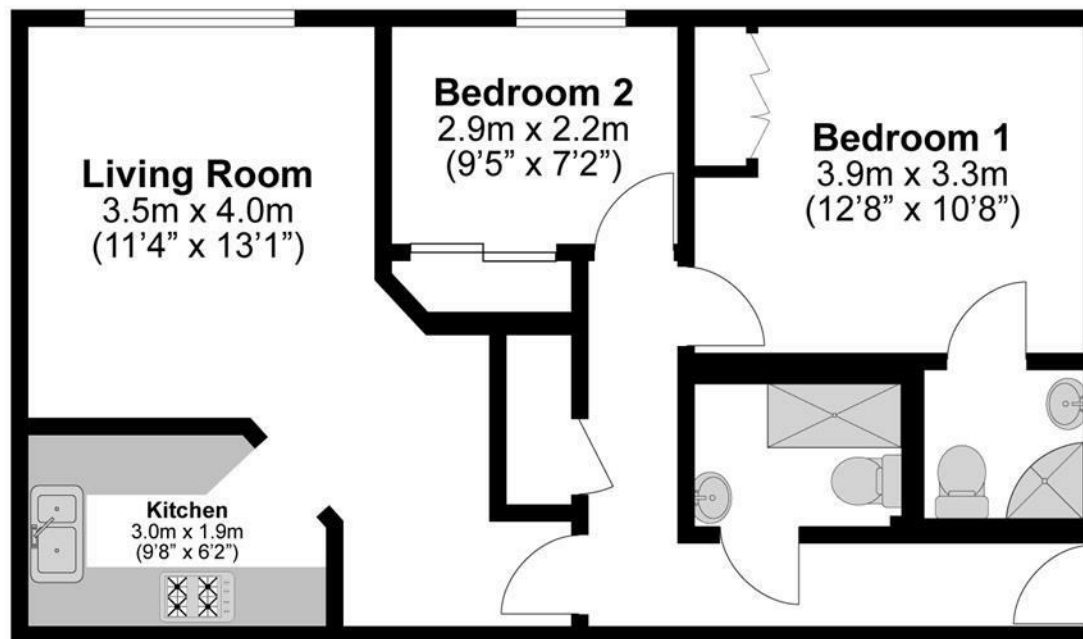
Ground Rent: Approx. £200.00 per year

Legal Note

Although these particulars are thought to be materially correct their accuracy cannot be guaranteed and they do not form part of any contract







**Illustrations are for identification purposes only,
measurements are approximate, not to scale.**